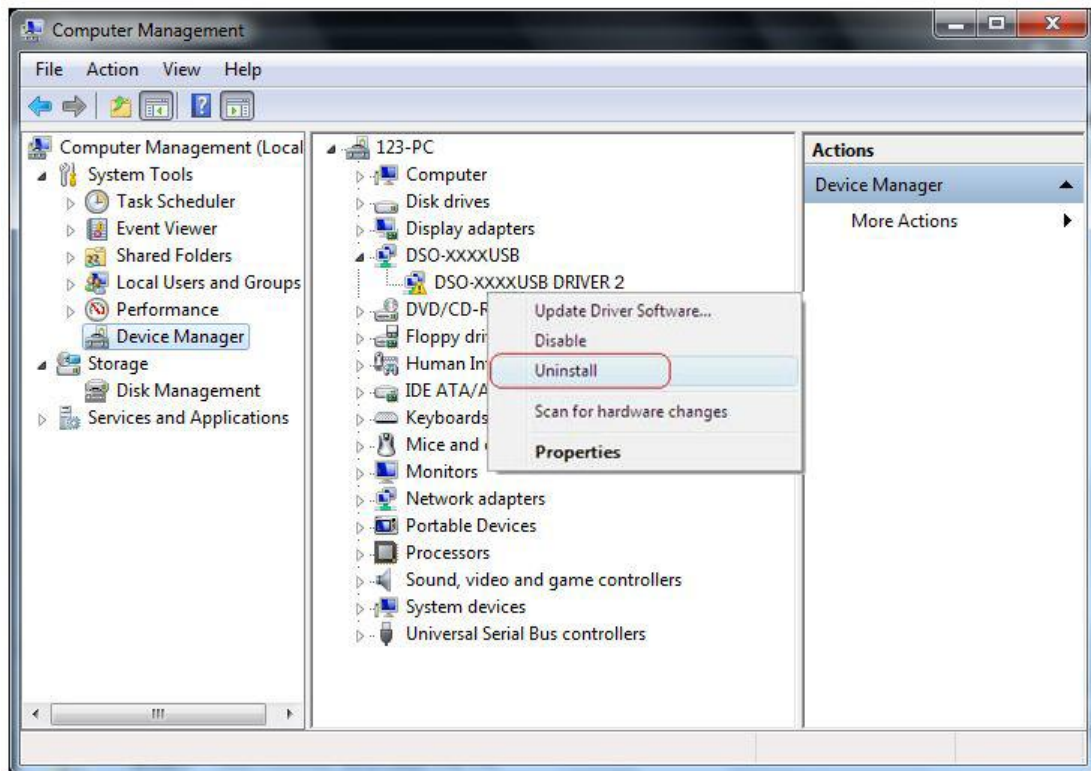


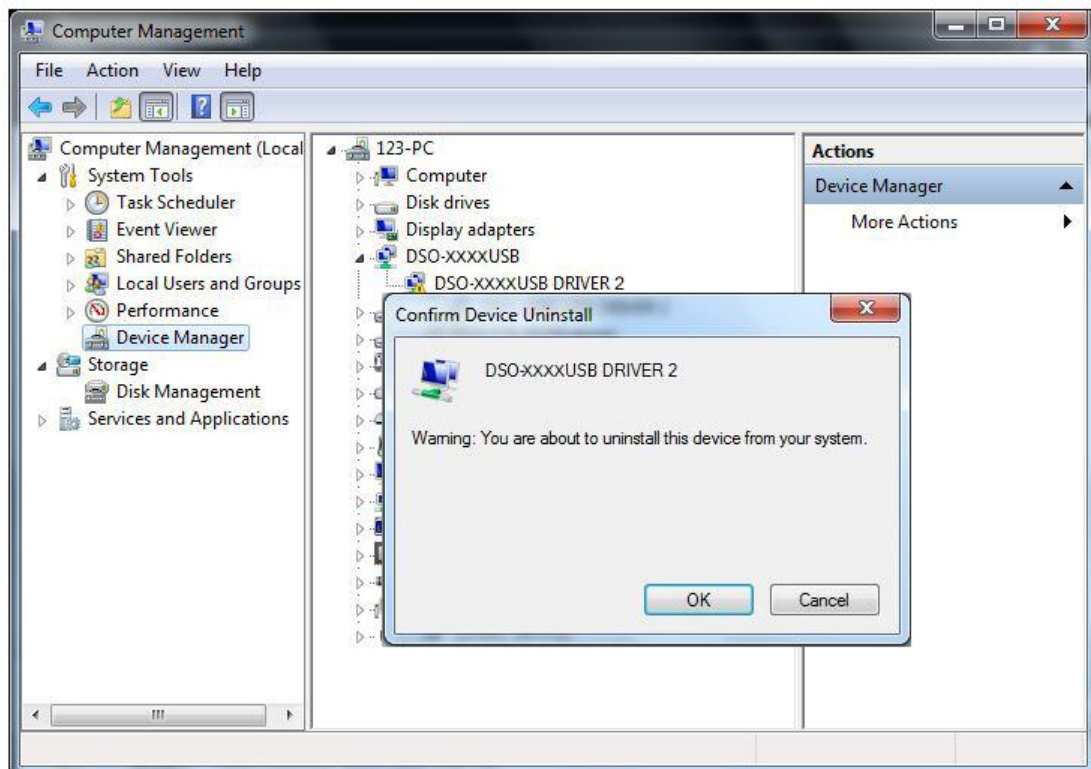
Connect instrument to PC port.

Open "Device Manager" again.

Select "DSO-xxxx USB DRIVER 2" and click "Uninstall".

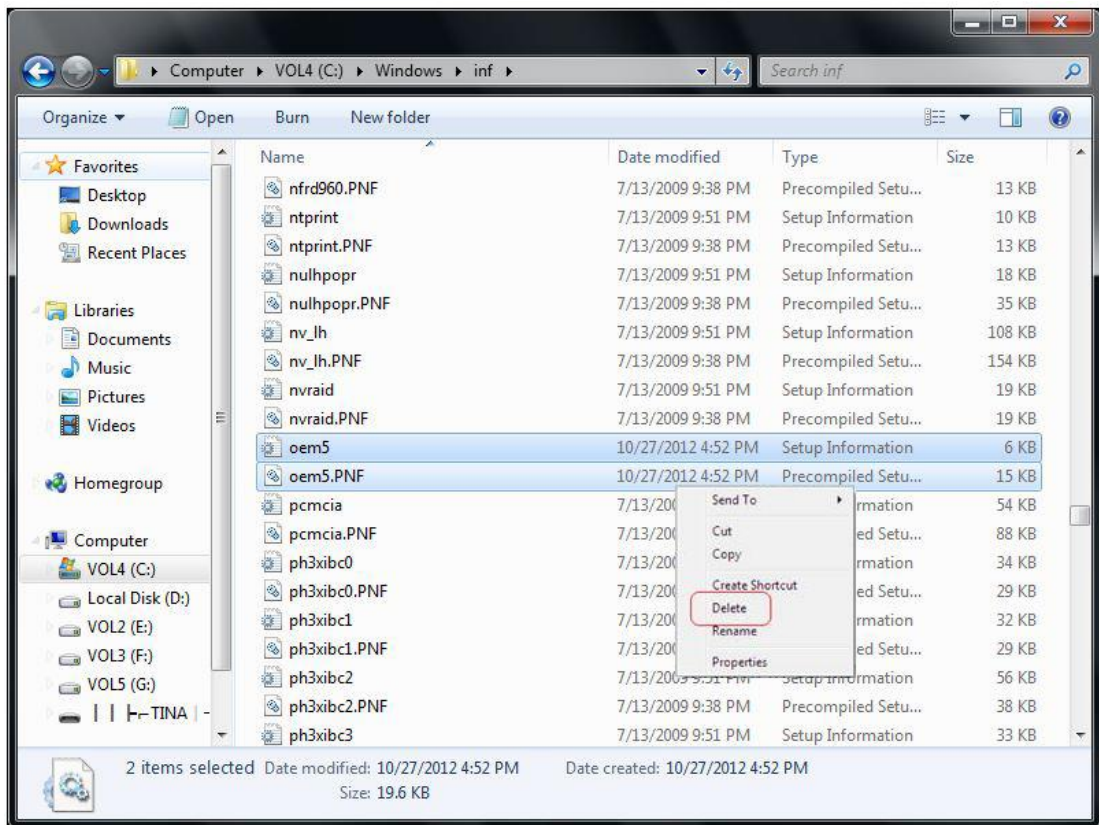
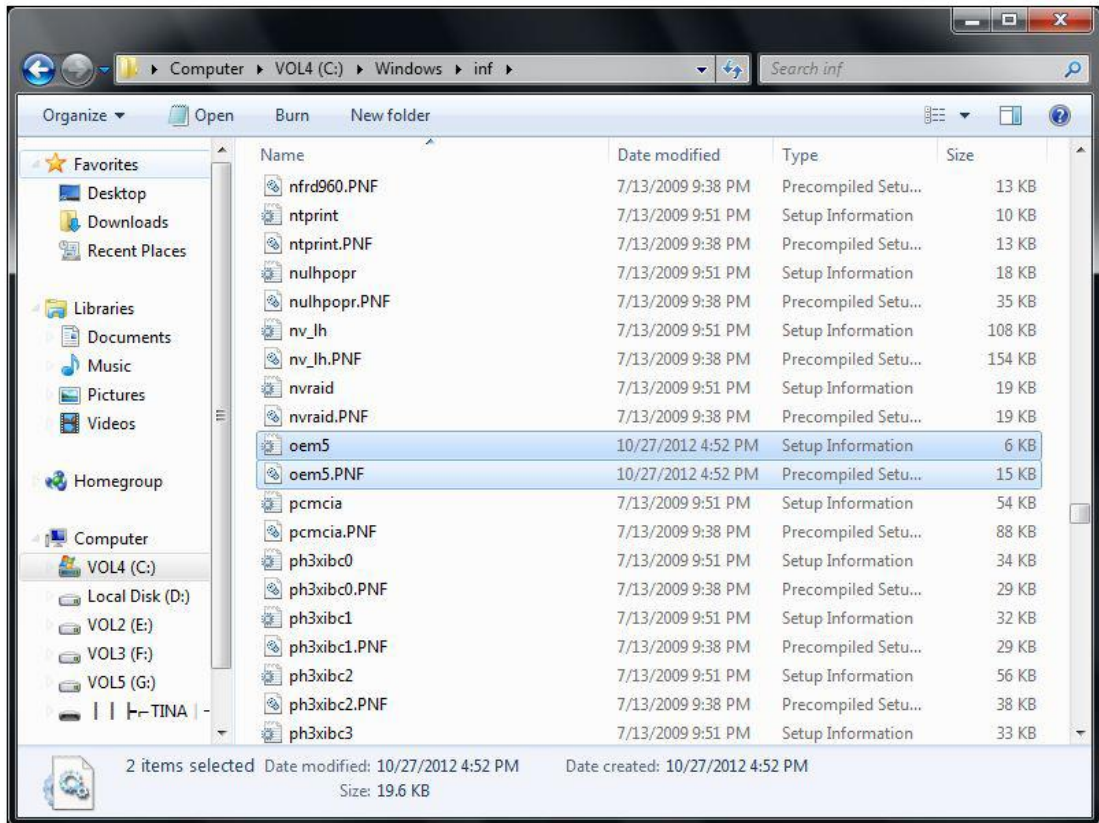


Click "OK".



Open "C:\WINDOWS\inf".

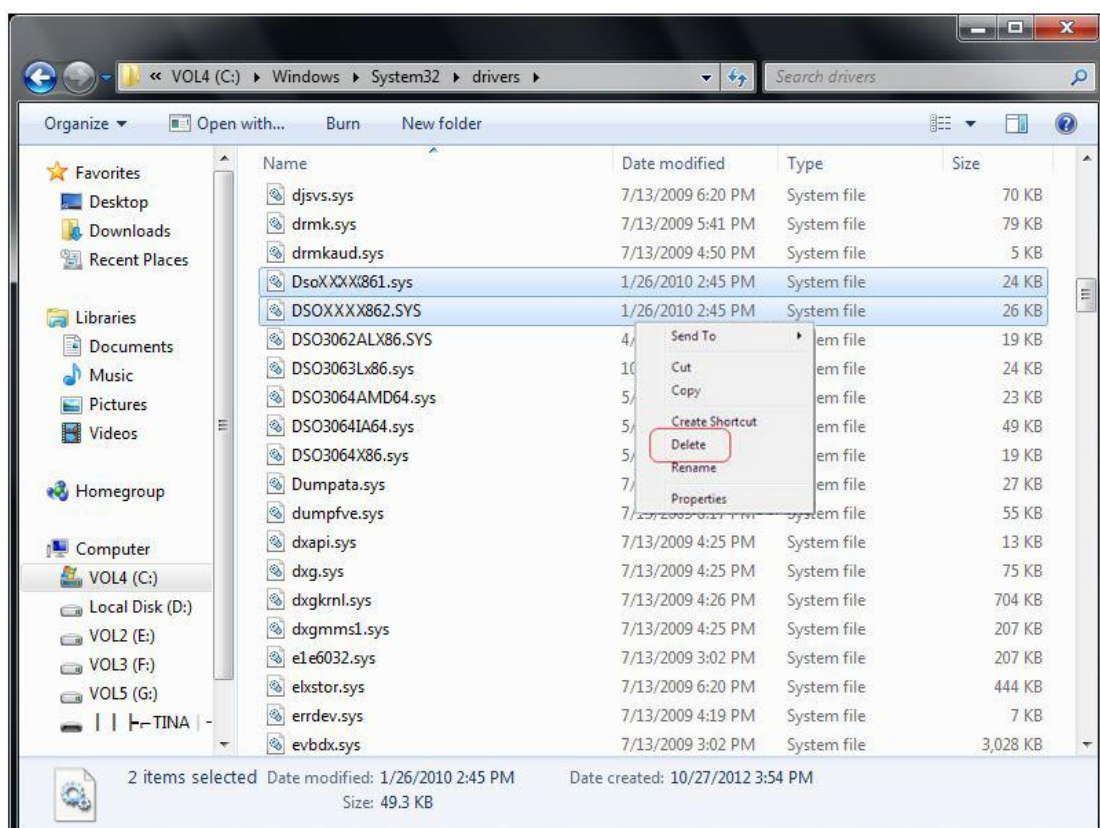
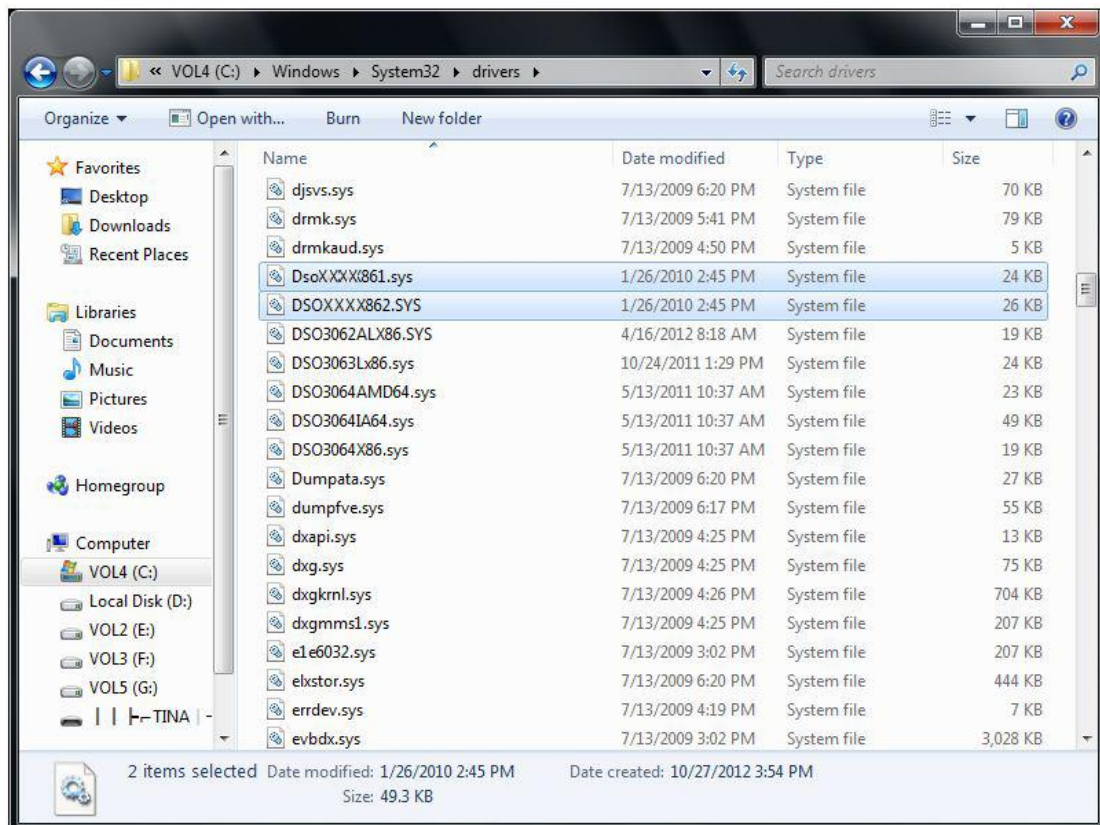
Select the files whose name start with "oem" and delete them. For example:"oem0.inf".



Open "C:\WINDOWS\System32\drivers".



Select "DSOxxxx1.SYS" and "DSOxxxx2.SYS" file. Then delete them.



Connect the instrument to PC port again.

It is the unknown device in the device manager.

Now you can install the new driver!